

## Fire Doors

The Winkhaus solution for FD30s fire doors



in  
Doors

**Xtremedoor**  
Keeping the heat in and intruders out

# Fire Doors

## The Winkhaus solution for FD30s fire doors

Fire Doors are a crucial element to any building having two important functions in a fire, when closed they form a barrier to fire and smoke spread but should also provide a suitable means of escape.

Winkhaus has worked extensively with the UK's leading suppliers of composite door slabs and fire seals to achieve FD30s accreditation for residential fire doors.

### autoLock AV2<sup>+</sup>

During fire door testing the AV2 locking points are automatically engaged when the door is closed, as opposed to conventional locks where the door is tested with only the latch engaged which can allow the door to distort due to the heat and may affect the test result adversely.

### Ecoframe™ Door Frame

Following extensive market research it was concluded that a viable alternative to timber and PVCu door frames was desirable that would not only help reduce costs but was also a product that could be recycled in accordance with the EU landfill directive.

Ecoframe™ is the answer, produced from recycled materials (polypropylene, polyurethane, paper and aluminium). Typically re-cycled from plastic shopping bags, plastic bottles and aluminium cans. The wipe clean surface is extremely resilient to accidental damage, vandalism and burglary attack and can be repaired or individual frame members replaced if required.

Ecoframe™ accepts market leading weatherseals and Intumescent seals for FD30s fire doors. Due to its very low thermal conductivity and UV stability Ecoframe™ is ideal frame material to compliment the latest designs in composite doors. Ecoframe™ is also compatible with leading brand Part M low threshold systems.

- Certified 100% Non-toxic material
- Certified ½ Hour fire door rated
- Certified 100% Non toxic gases when burning

For further details of autoLock AV2<sup>+</sup>, Ecoframe™ and Fire door testing please contact Winkhaus UK Ltd [www.winkhaus.co.uk](http://www.winkhaus.co.uk)



## For the ultimate in safety, choose our high performance fire doors



Vista fire doors are manufactured using Nan Ya slabs and provide 30 minutes of fire door performance. Our fire doors use an Ecoframe which is made using recycled materials and is specifically designed for 44mm thick composite door slabs. With a mechanically jointed system, individual frame parts can be replaced if needed.

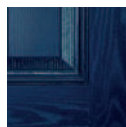
Our fire doors are best suited for the private and social housing sector and can be supplied glazed or unglazed.

- Nan Ya slab / Ecoframe
- Outer-frame available in RAL 9016 / White powder coat finish
- Certified 30 minutes fire door rating
- 100% non-toxic material and 100% non-toxic gases when burning
- 44mm FD30 GRP door blank
- FD30 fire rated glass

### Colour Options



Black



Blue



Green



Red



White



### Automatic door lock for instant security

Vista fire doors use an automatic door locking system. The hook locking points are automatically engaged when the door is closed, providing instant security without the need to lift a handle or use a key operated or thumb turn cylinder.

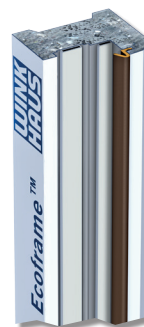
As such the lock is ideal for installations in areas where residents are unable to use a standard lift lever handle and is suitable for a range of applications, particularly fire doors and communal doors.

# Fire Doors

The Winkhaus solution for FD30s fire doors



1



2



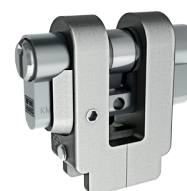
3



4



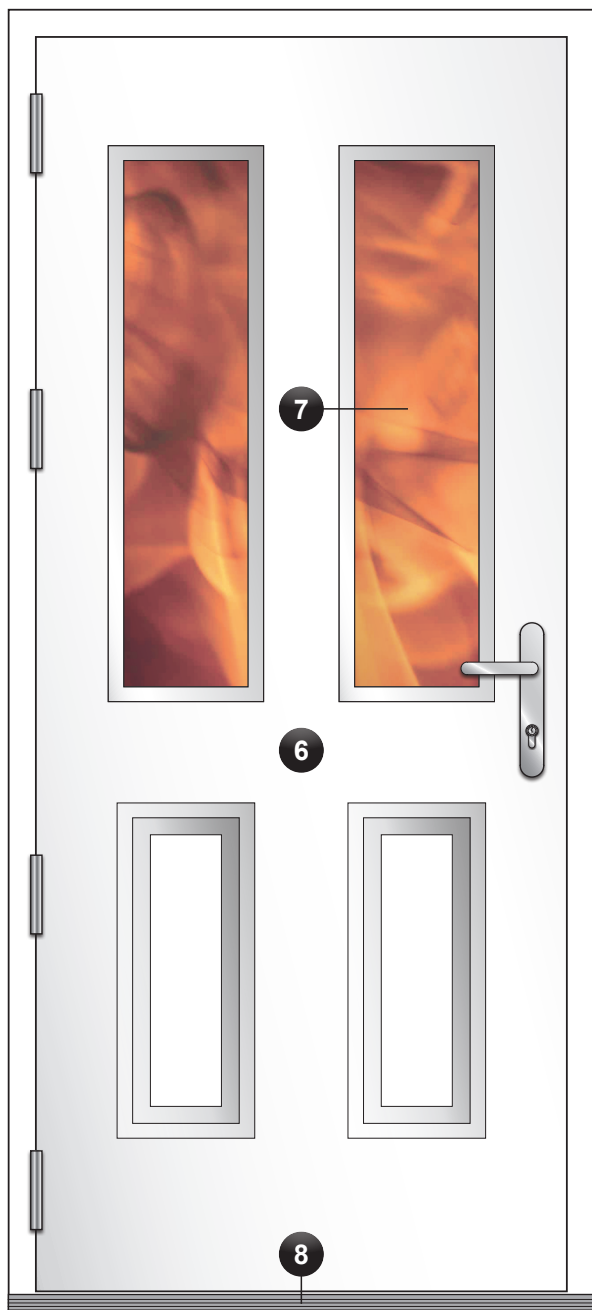
5



Description	Supplier
<b>Outer frame</b> Winkhaus Ecoframe™ supplied complete with weather seal gasket Q-Lon Aquamac 21. Transoms, glazing beads and couplings available for side and fan lights For details of workshop machinery please refer to the Ecoframe™ manual  Ecoframe™ 70 x 60 x 2400 White - Part No. 2837381 Eco Transom 70 x 72 x 1200 - Part No. 2869391 Eco Glazing Bead x 2400 - Part No. 2917541 Eco Add on 70 x 20 x 2400 - Part No. 2869404	Winkhaus UK Ltd 2950 Kettering Parkway Kettering Northants NN15 6XZ Tel: 01536 316000
<b>Door Hinge</b> Winkhaus Ecoframe Hinge - 102mm x 38mm Sealed for life low friction roller bearings  Eco frame hinge pvd gold on stainless steel - Part No. 4931896 Eco frame hinge satin stainless steel - Part No. 2837373	
<b>Door Lock</b> Winkhaus autoLock AV2 <sup>+</sup> and keeps Available with 16mm or 20mm faceplates Available with 35mm, 45mm and 55mm backsets	
<b>Door Handles</b> Winkhaus aluminium Palladio™ Quick-Fit Door handle Available in various styles and anodised or powder coated finishes	
<b>Europrofile Cylinder</b> Winkhaus XR6-51 Kitemark Cylinder (KM Number 531333) Available in brass / nickel Available in various sizes  <b>Cylinder Guard</b> Winkhaus Armorshield™ Designed to protect the cylinder from physical attack Meets PAS 24 and TS007 2☆ requirements  Armorshield (for cylinders with external size <45mm) - Part No. 2895451 Armorshield (for cylinders with external size >45mm) - Part No. 2895469	

# Fire Doors

The Winkhaus solution for FD30s fire doors



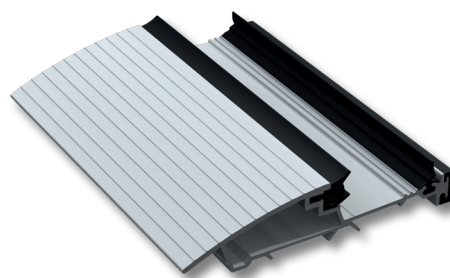
6



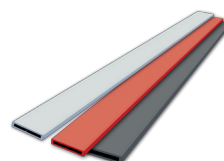
7



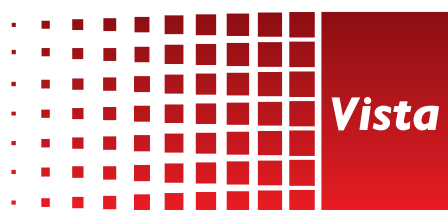
8



9



Description	
<b>Door Sash + Glazing Cassette Option 1</b> <b>Nan Ya Fire Door</b> Style ref FD30 door styles 914, 838 and 762mm wide options. Including all solid and glazed panel design styles	
<b>Door Sash + Glazing Cassette Option 2</b> <b>Capstone Fire Door</b> Style ref FD30 door styles 914, 838 and 762mm wide options. Including all solid and glazed panel design styles	
<b>Glass Option 1</b> GWRC + clear or stippolyte laminate double glazed unit  <b>Glass Option 2</b> Pyrobelite™ on clear or stippolyte laminate double glazed unit	
<b>Aluminium Threshold</b> Exitex MDS Range	
<b>Intumescent Seals</b> Therm A Seal and Therm A Flex ranges used on Outer Frame, Door Hinge, Door Lock, Armorshield™, Letter Plate and Eye Viewer	



Vista Panels – Unit H1 | Prenton Way  
North Cheshire Trading Estate | Wirral | CH43 3DU  
**T:** 0151 608 1423 | **F:** 0151 608 5474 | **E:** [info@vista-panels.co.uk](mailto:info@vista-panels.co.uk)  
**[www.vistapanel.co.uk](http://www.vistapanel.co.uk)**