

Installation Care & Maintenance Instructions

This document must be left with the Homeowner upon completion of the installation

Please read completely before starting the installation

Important information

Solvents and abrasive cleaners will damage the surface finish so should not be used in any circumstances. See care and maintenance on back page for guidance

The hinges are adjustable but are only for minor corrections and will not compensate for incorrect installation

After removal of the old door the opening must be thoroughly cleaned and the door leaf must be protected from falling debris during installation

Please Note:

The code of practice for installation as issued by the British Plastics Federation should be complied with at all times. Failure to install your doorset and all associated items in strict accordance with these instructions may invalidate any future warranty claim. Select fixings that are appropriate for the substrate the frame is to be fitted to. This guide assumes substrate is brick or concrete block. For timber frame buildings refer to system provider's detail for recommended fixings

Keys

On Key/Key cylinders the keys are screwed to the top of the frame in between the ribs. Top light frames may be on the side. Thumbturn cylinders are not fitted in the door and are supplied loose in the box with the keys

Pre installation checks

Please see inside for required check list

Prior to removing the existing door the size, type and condition of all doorsets should be checked against both original order size and the actual aperture.

Care should be taken to examine the Door leaf and frame for damage prior to installation as no responsibility can be accepted once the door has been installed.

The door-set specification including hardware, glazing and door style should be checked against the order acknowledgement. Before discarding any packaging, check for any components and check that all ancillary components are accounted for. Loose components are handles, hinge caps, cill end caps, Thumbturn cylinder, numerals door knobs etc.

Side/ Top/Wing lights/Combination top light frames

These are supplied temporary glazed and it is expected that they are deglazed, fixings installed and reglazed

Please take the following into account before starting the installation

Doorsets should be installed using the air gaps between the door leaf and frame as a guide, there should be an equal 4/5mm across the head and down both sides

Cleats/straps and Fisher type screw/plug fixings are not suitable, self-drilling type fixings (Rapier) should be used and the frame should be pilot drilled prior to drilling brickwork

Minimum fixing lengths

Large outer 80mm Frame = 120mm

Intermediate outer 65mm Frame = 100mm

The fixing length should be increased if gaps between frame and brickwork are more than 5/10mm

Fixing Positions Recommended:-

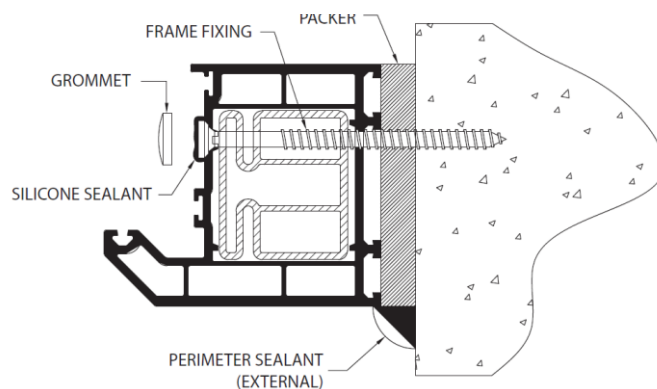
Generally, all three sides of the frame shall be secured, however it is understood that dependant on the lintel used at the head, fixing at this point is not always possible. There should be minimum of 6no fixing points to each jamb, with each fixing point being above and below a hinge or keep position. Corner fixings should be maximum 150mm away from the external corner. Intermediate fixings should be at centres no greater than 450mm

Important information

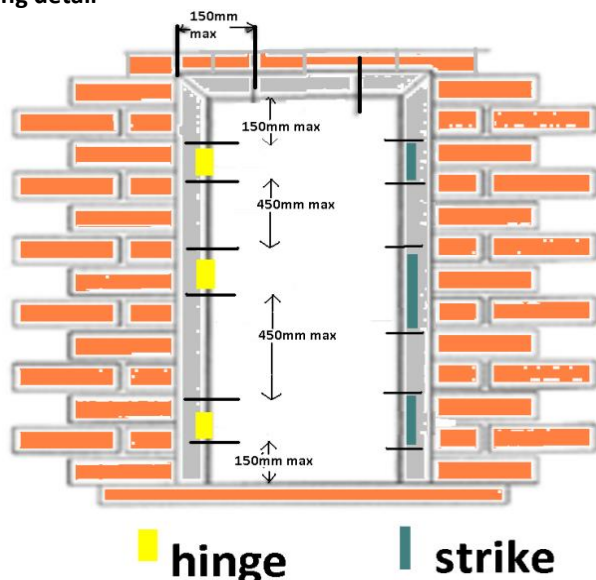
The frame should never be pushed tight back to the plaster line as this can lead to the door being fitted in twist, always allow 10mm clearance for in/out frame adjustment

Care should be taken when propping the door leaf to achieve the first fixing, timber should be used to avoid chipping of the bottom edge.

All measurements are a guide only and care should be taken to avoid mortar joints as all fixings need to be secure. Expanding foam is not a substitute as it will not support the weight of a door leaf



Fixing detail



Fixing position detail

Side/Top/ Wing lights/ GRP side panels (if supplied)

These should be checked for size and damage prior to installation as no responsibility can be accepted once installed. A 10mm aluminium coupler is supplied, either EWS 510A (as drawing) or AE10) and this should be fixed as below.

If you supply your own a suitable structural aluminium coupler must be installed, failure to do so will invalidate the warranty.

In all instances fixings used should be bay post fixings to suit profile depth, quick grip clamps should be used at each fixing point to ensure frames do not distort

Installation Instructions

The cill/aluminium threshold should be bedded onto the brickwork/stone cill using silicone ensuring it does not block the drain holes in the threshold

Install the hinge side of the frame plumb and level using a 6ft level/straight edge ensuring that the frame is packed (if required) to allow the head to be fitted level Ensuring the hinges are centre, make sure you have a 4/5mm equal air gap between door leaf and frame from top to bottom.

Critical check

The air gap from the top hinge to the top of the door leaf must be equal, if it is not it must be corrected before continuing with the installation

The use of a level/straight edge is now no longer required

Close the door and pack the cill/ frame (if required) until you have an equal air gap across the head of the door (4/5 mm)

Install two fixings 100mm above and below the centre keep on the lock side ensuring that the frame is square in the aperture i.e. it is not twisting the hinge side and ensuring there is a 4/5 mm equal air gap between the door leaf and frame

Close the door and check that the door leaf is touching the gasket from the centre keep to the top of the door and then mark the brickwork. Open the door and install the top fixing just above the top keep, using the mark as a guide, again ensuring there is a 4/5 mm air gap Repeat the above for the bottom fixing but 50mm below the keep

Once the operation of the door has been checked the remaining fixings can be installed

Expanding foam should now be applied between the frame and brickwork ensuring only enough is used to avoid distorting the frame when it expands.

Once the foam has dried it can be cut away and perimeter sealing can be carried out. Ensure the frame is free from dust and debris before applying silicone.

Do not seal across the front of the aluminium threshold as the drain holes are concealed behind the front ramp

Installation in Exposed locations

Perimeter sealing is required if door is installed in very exposed locations, we recommend a tight bead of clear sealant and it is required from Glass to cassettes, slab to cassettes, letterplate and top of rain deflector

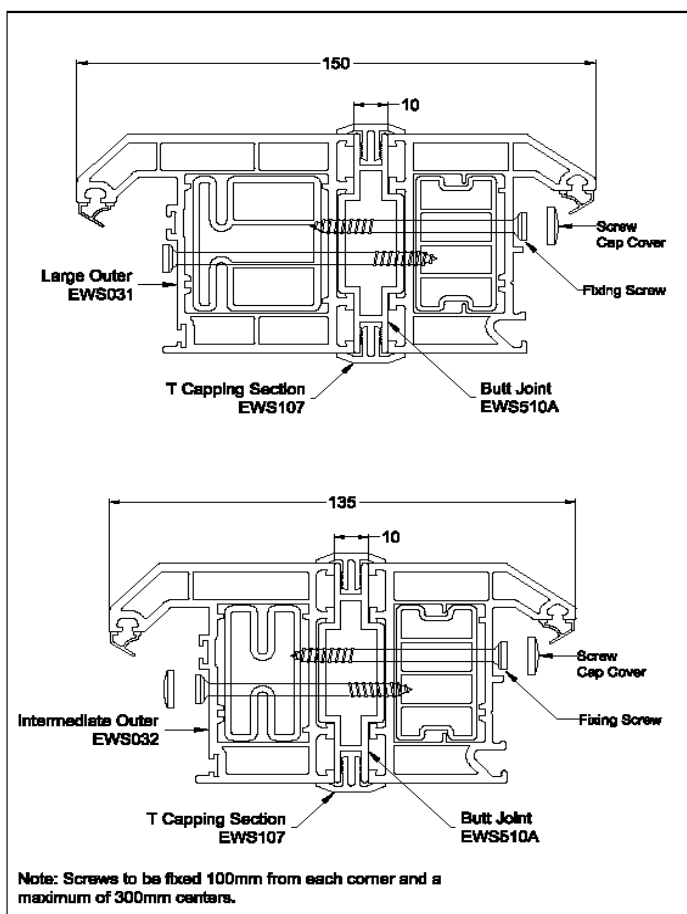
Handles/ Keeps

Important information

Lever type handles and keeps should only ever be fitted/adjusted using hand held screwdrivers, Cordless/ Torque drivers must not be used

Handles (all types)

Installation instructions if required are available on our Website <https://www.xtremedoor.co.uk>



Care & Maintenance

Your new door will need very little maintenance. The amount of cleaning and servicing required will be dependent on the location of the door, if it is on a main road, in a coastal area or in an industrialised area it will need more maintenance than a door that is installed in the countryside

In all instances please do not:-

Use chemical cleaners

Use bleach or solvent

Use abrasive cleaners or scouring pads

Use pressure washers or steam cleaners

Apply any adhesives of any type of tack (Blu Tack is an adhesive)

Allow to come into contact with sharp objects

Hang ornaments on the door as they will scratch the surface in windy conditions

When opening the door care should be taken to avoid damaging the surface finish. Large bunches of keys, shopping bags etc. can scratch the surface and would not be covered under warranty

Cleaning

Door leaf (Part that opens) and furniture

This will need occasional cleaning and should only be done with warm soapy water (washing up liquid is suitable) and a soft lint free cloth. Once clean the furniture should be dried with a soft cloth.

Stainless steel hardware does require cleaning or the dust/ dirt in the air will stick to the surface and if left can give the effect of pitting/rusting (known as Tea Staining). Should this happen full maintenance instructions are available on our Website

<https://www.xtremedoor.co.uk>

Frame

The frame should also be cleaned with warm soapy water but any stubborn, greasy stains can be removed using Cif or equivalent

If the frame has a painted finish Cif is not advised.

Glass

Clean with warm soapy water but care should be taken that the cloth used does not snag any lead design

Gasket

The gasket has a silicone lubricant applied and should need no maintenance other than a wipe with warm soapy water when cleaning the rest of the door

Threshold

The threshold should be kept clear of debris and should be cleaned with warm soapy water when cleaning the rest of the door. The channel between the two gaskets should be vacuumed occasionally to ensure the drain holes remain clear.

The threshold should be stepped over when entering and leaving the building to avoid damaging the gaskets

Hinges

The hinges are maintenance free however when maintaining the lock, the top caps can be removed and a small amount of silicone spray can be applied to the pins.

Locking Mechanism and Cylinder

The lock and cylinder will require occasional maintenance. Every 6 months is recommended but may be more often dependant on the area you live in

With the door open lift the handle so the hooks are on show, check for dust and debris and clean if necessary.

The hooks, latch and keeps in the door frame should then be lubricated using a lithium spray grease or silicone spray. Manipulate the handle several times and then lubricate again. Do not use WD40® or other oils.

The cylinder is supplied with 3 keys, should you require additional keys to be cut, a certified locksmith should be used as they will use genuine manufacturer's blanks. Other key cutting companies can use copy blanks and these can be of poor quality and cause the cylinder to fail. The cylinder should be lubricated every 6 months. Lubricate with lock graphite or graphite pencil. Apply this lubricant to the key only and work the key in and out of cylinder a few times. Never apply lubricant directly into the cylinder as this may cause the internal pins to stick. Do not use WD40® or other oils

Keeps

After a period of time the gasket on your door will compress and keep adjustment may be necessary. This can be done by loosening the screws top and bottom with a hand held screwdriver, moving the plate in 1/2mm and re tightening

Handle operation

Lever/Lever and Lever/Lever offset handles

Operating instructions are available on our Website

<https://www.xtremedoor.co.uk>

Heritage lock / Rim pull/Bar handle

The euro profile locking cylinder is at a similar height to a traditional round cylinder pull and the lock is operated automatically as soon as the door is closed. This means that an external lever handle is not required to operate the locking points and the lock can be opened externally by turning the key a quarter of a turn. From the inside the door can be opened by an internal thumb turn, again with a quarter turn. The door is automatically locked when closed from the inside and the key is then required to gain entry from the outside.

Once closed the door can be fully deadlocked by turning the key/thumbturn one full turn in the opposite direction to the way it is turned to open the door.

Guarantee

Your door and furniture is guaranteed for 10 years with the following exceptions which are 5 years

Rosewood and Oak surface finish

Doors which have a Painted finish

Double Glazed Units

It is intended that the door is fitted in a residential family home, HMOs, rental properties and commercial applications may be subject to some exclusions

In all instances any claims needs to be made through the installer/company the door was purchased through.

Xtreme door is a trading name of Vista Panels Ltd