

Installation Instructions

Important information

Solvents and abrasive cleaners will damage the surface finish so should not be used in any circumstances. See care and maintenance on back page for guidance

The hinges are adjustable but are only for minor corrections and will not compensate for incorrect installation

After removal of the old door the opening must be thoroughly cleaned and the door leaf must be protected from falling debris during installation

Please Note:

The code of practice for installation as issued by the British Plastics Federation should be complied with at all times. Failure to install your doorset and all associated items in strict accordance with these instructions may invalidate any future warranty claim. Select fixings that are appropriate for the substrate the frame is to be fitted to. This guide assumes substrate is brick or concrete block. For timber frame buildings refer to system provider's detail for recommended fixings

Keys

On Key/Key cylinders the keys are screwed to the top of the frame in between the ribs. Top light frames may be on the side. Thumbturn cylinders are not fitted in the door and are supplied in the vacuum pack.

Pre installation checks

Please see inside for required check list

Prior to removing the existing door the size, type and condition of all doorsets should be checked against both original order size and the actual aperture

Care should be taken to examine the Door leaf and frame for damage prior to installation as no responsibility can be accepted once the door has been installed

The door-set specification including hardware, glazing and door style should be checked against the order acknowledgement. Before discarding any packaging, check for any components and check that all ancillary components are accounted for. Loose components are

handles, hinge caps, cill end caps, Thumbturn cylinder, numerals door knobs are all in the vacuum pack.

Side/ Top/Wing lights/Combination top light frames

These are supplied temporary glazed and it is expected that they are deglazed, fixings installed and reglazed

Please take the following into account before starting the installation

Doorsets should be installed using the air gaps between the door leaf and frame as a guide, there should be an equal 4/5mm across the head and down both sides

Cleats/straps and Fisher type screw/plug fixings are not suitable, self-drilling type fixings (Rapier) should be used and the frame should be pilot drilled prior to drilling brickwork

Minimum fixing lengths

Large outer	80mm Frame	= 120mm
Intermediate outer	65mm Frame	= 100mm

The fixing length should be increased if gaps between frame and brickwork are more than 5/10mm

Fixing Positions Recommended:-

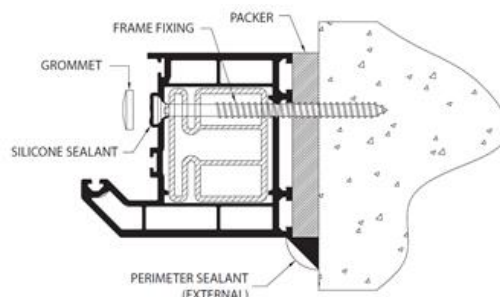
Generally, all three sides of the frame shall be secured, however it is understood that dependant on the lintel used at the head, fixing at this point is not always possible. There should be minimum of 6no fixing points to each jamb, with each fixing point being above and below a hinge or keep position. Corner fixings should be maximum 150mm away from the external corner. Intermediate fixings should be at centres no greater than 450mm

Important information

The frame should never be pushed tight back to the plaster line as this can lead to the door being fitted in twist, always allow 10mm clearance for in/out frame adjustment

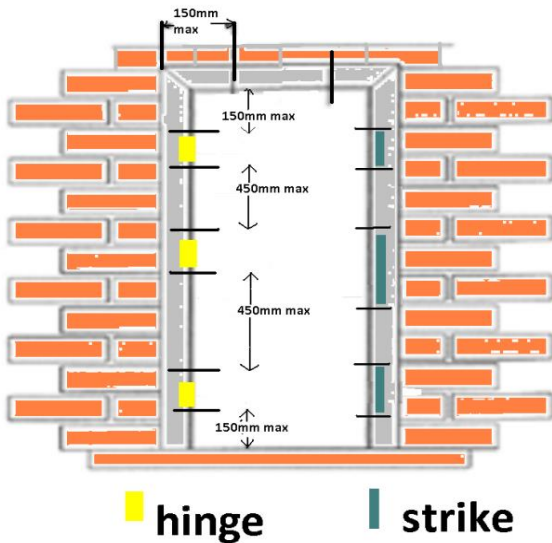
Care should be taken when propping the door leaf to achieve the first fixing, timber should be used to avoid chipping of the bottom edge.

All measurements are a guide only and care should be taken to avoid mortar joints as all fixings need to be secure.



Expanding foam is not a substitute as it will not support the weight of a door leaf

Fixing detail



Fixing position detail

Side/Top/ Wing lights/ GRP side panels (if supplied)

These should be checked for size and damage prior to installation as no responsibility can be accepted once installed. A 10mm aluminium coupler is supplied, either EWS 510A (as drawing) or AE10) and this should be fixed as below. If you supply your own a suitable structural aluminium coupler must be installed, failure to do so will invalidate the warranty.

In all instances fixings used should be bay post fixings to suit profile depth, quick grip clamps should be used at each fixing point to ensure frames do not distort

Fixing position detail

Side/Top/ Wing lights/ GRP side panels (if supplied)

These should be checked for size and damage prior to installation as no responsibility can be accepted once installed. A 10mm aluminium coupler is supplied, either EWS 510A (as drawing) or AE10) and this should be fixed as below. If you supply your own a suitable structural aluminium coupler must be installed, failure to do so will invalidate the warranty. In all instances fixings used should be bay post fixings to suit profile depth, quick grip clamps should be used at each fixing point to ensure frames do not distort

Installation Instructions

The cill/aluminium threshold should be bedded onto the brickwork/stone cill using silicone ensuring it does not block the drain holes in the threshold
 Install the hinge side of the frame plumb and level using a 6ft level/straight edge ensuring that the frame is packed (if required) to allow the head to be fitted level
 Ensuring the hinges are centre, make sure you have a 4/5mm equal air gap between door leaf and frame from top to bottom.

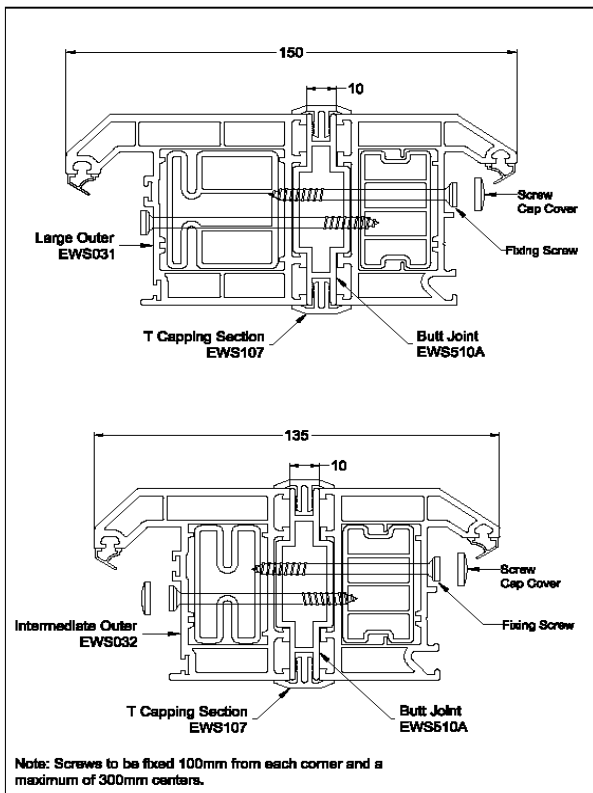
Critical check

The air gap from the top hinge to the top of the door leaf must be equal, if it is not it must be corrected before continuing with the installation

The use of a level/straight edge is now no longer required

Close the door and pack the cill/ frame (if required) until you have an equal air gap across the head of the door (4/5 mm)
 Install two fixings 100mm above and below the centre keep on the lock side ensuring that the frame is square in the aperture i.e. it is not twisting the hinge side and ensuring there is a 4/5 mm equal air gap between the door leaf and frame

Close the door and check that the door leaf is touching the gasket from the centre keep to the top of the door and then mark the brickwork. Open the door and install the top fixing just above the top keep, using the mark as a guide, again ensuring there is a 4/5 mm air gap Repeat the above for the bottom fixing but 50mm below the keep



Once the operation of the door has been checked the remaining fixings can be installed

Expanding foam should now be applied between the frame and brickwork ensuring only enough is used to avoid distorting the frame when it expands.

Once the foam has dried it can be cut away and perimeter sealing can be carried out. Ensure the frame is free from dust and debris before applying silicone. Do not seal across the front of the aluminium threshold as the drain holes are concealed behind the front ramp

Installation in Exposed locations

Perimeter sealing is required if door is installed in very exposed locations, we recommend a tight bead of clear sealant and it is required from Glass to cassettes, slab to cassettes, letterplate and top of rain deflector

Handles/ Keeps

Important information

Lever type handles and keeps should only ever be fitted/adjusted using hand held screwdrivers, Cordless/ Torque drivers must not be used

Handles (all types)

Installation instructions if required are available on our Website <https://www.xtremedoor.co.uk>

Installation Instructions

The cill/aluminium threshold should be bedded onto the brickwork/stone cill using silicone ensuring it does not block the drain holes in the threshold

Install the hinge side of the frame plumb and level using a 6ft level/straight edge ensuring that the frame is packed (if required) to allow the head to be fitted level

Ensuring the hinges are centre, make sure you have a 4/5mm equal air gap between door leaf and frame from top to bottom.

Critical check

The air gap from the top hinge to the top of the door leaf must be equal, if it is not it must be corrected before continuing with the installation

The use of a level/straight edge is now no longer required

Close the door and pack the cill/ frame (if required) until you have an equal air gap across the head of the door (4/5 mm)

Install two fixings 100mm above and below the centre keep on the lock side ensuring that the frame is square in the aperture i.e. it is not twisting the hinge side and ensuring there is a 4/5 mm equal air gap between the door leaf and frame

Close the door and check that the door leaf is touching the gasket from the centre keep to the top of the door and then mark the brickwork. Open the door and install the top fixing just above the top keep, using the mark as a guide, again ensuring there is a 4/5 mm air gap Repeat the above for the bottom fixing but 50mm below the keep

Once the operation of the door has been checked the remaining fixings can be installed

Expanding foam should now be applied between the frame and brickwork ensuring only enough is used to avoid distorting the frame when it expands.

Once the foam has dried it can be cut away and perimeter sealing can be carried out. Ensure the frame is free from dust and debris before applying silicone. Do not seal across the front of the aluminium threshold as the drain holes are concealed behind the front ramp

Installation in Exposed locations

Perimeter sealing is required if door is installed in very exposed locations, we recommend a tight bead of clear sealant and it is required from Glass to cassettes, slab to cassettes, letterplate and top of rain deflector

Handles/ Keeps

Important information

Lever type handles and keeps should only ever be fitted/adjusted using hand held screwdrivers, Cordless/ Torque drivers must not be used

Handles (all types)

Installation instructions if required are available on our Website <https://www.xtremedoor.co.uk>

If Numerals have been supplied the screw holes should be marked and pilot drilled using a 2mm drill bit.

